

Schaedler
yesco

**Wire Services that
Make Sense**

Products and Solutions for the Electrical Industry

Who We Are



Our History

- Since 1924
- 4th Generation
- 29 locations
- Largest PA Independent



The Foundation

- Core Values
 - Integrity
 - Profitability
 - Accountability
 - Teamwork
- The SYD Way
- Our Culture



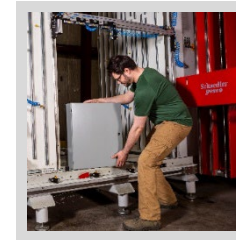
Real Life Experience

- Diversity of ideas and experience
- Collaborative environment
- Ongoing Training and improvement
- Experience is valued



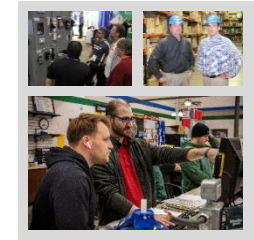
Work Hard. Go Home Happy.

- Work-Life Balance
- Open Door
- Profit Sharing & Benefits
- Best Place to Work in PA



Real Life Solutions

- Tech Specialists in Key Categories
- Customized Programs
- Solutions to YOUR challenges

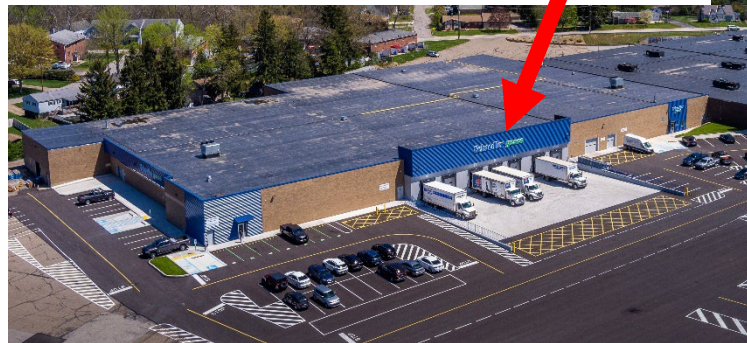
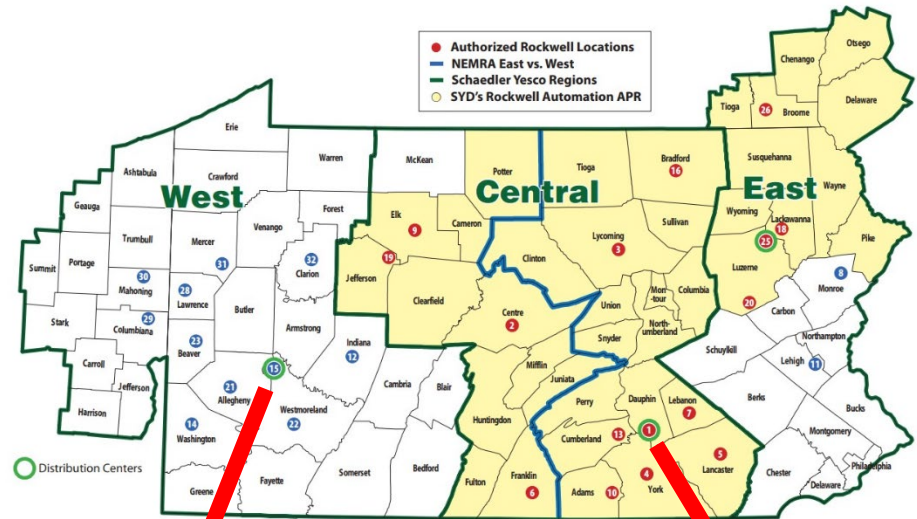


Experience the Difference

- No Red Tape
- Empowered team members
- Can-do Attitude

Who We Are

- 29 Locations
- WEST territory includes:
 - Pittsburgh NS - 21
 - Lower Burrell - 15
 - Greensburg - 22
 - Meadowlands - 14
 - Indiana - 12
 - New Brighton - 23
- New Castle - 28
 - Clarion - 32
 - Grove City - 31
 - Columbiana, OH - 29
 - Youngstown, OH - 30



Lower Burrell, RDC



Harrisburg, CDC

Wire Offering

- Over 75,000,000 feet of wire in a year
- Master wire racks in our CDC and RDCs
- Local wire service at all 29 locations



Wire Offering

COPPER

- Bare
- BXMC Armored
- Cord
- Dryer / Range Cords
- Electronic
- Extension Cords
- Fire Alarm

- High Temp
- Instrumentation
- MTW
- OLFLEX Control Wiring
- Romex NMB
- Solar
- SRML Silicone Rubber Motor Lead
- Surge Strips

- TFFN / TFN
- Thermocouple
- Thermostat
- THHN
- UF – Underground (Direct Burial)
- Welding
- XHHW

ALUMINUM

- Direct Burial
- Overhead
- SER Sub Feed
- SEU Service Cable
- XHHW

DATA CABLING

- Coax
- Electronic Cable
- Category Cable
- Fiber Optic Cable
- Ethernet and Data Cables

FACTORY AUTOMATION / INDUSTRIAL

- Compression Terminals
- Control & Instrumentation
- Flexible Conduit
- Hook Up Wire
- Motor & Drive Cables
- Portable Cord
- Power Cables

Wire Offering



THHN & XHHW – Copper and Aluminum

In-Stock Colors and Sizes*

Solid ●
Stranded ☼

AWG	BLACK		WHITE		RED		BLUE		BROWN		ORANGE		YELLOW		GRAY		GREEN		PURPLE		PINK		Green/Yellow		White/Blue		Blue/White	
	THHN	XHHW	THHN	XHHW	THHN	XHHW	THHN	XHHW	THHN	XHHW	THHN	XHHW	THHN	XHHW	THHN	XHHW	THHN	XHHW	THHN	XHHW	THHN	XHHW	THHN	XHHW	THHN	XHHW	THHN	XHHW
18	●	●	●	●	●	●	●	●	●	●	●	●	●	●	●	●	●	●	●	●	●	●	●	●	●	●	●	●
16	●	●	●	●	●	●	●	●	●	●	●	●	●	●	●	●	●	●	●	●	●	●	●	●	●	●	●	●
14	●	●	●	●	●	●	●	●	●	●	●	●	●	●	●	●	●	●	●	●	●	●	●	●	●	●	●	●
12	●	●	●	●	●	●	●	●	●	●	●	●	●	●	●	●	●	●	●	●	●	●	●	●	●	●	●	●
10	●	●	●	●	●	●	●	●	●	●	●	●	●	●	●	●	●	●	●	●	●	●	●	●	●	●	●	●
8	●	●	●	●	●	●	●	●	●	●	●	●	●	●	●	●	●	●	●	●	●	●	●	●	●	●	●	●
6	●	●	●	●	●	●	●	●	●	●	●	●	●	●	●	●	●	●	●	●	●	●	●	●	●	●	●	●
4	●	●	●	●	●	●	●	●	●	●	●	●	●	●	●	●	●	●	●	●	●	●	●	●	●	●	●	●
3	●	●	●	●	●	●	●	●	●	●	●	●	●	●	●	●	●	●	●	●	●	●	●	●	●	●	●	●
2	●	●	●	●	●	●	●	●	●	●	●	●	●	●	●	●	●	●	●	●	●	●	●	●	●	●	●	●
1	●	●	●	●	●	●	●	●	●	●	●	●	●	●	●	●	●	●	●	●	●	●	●	●	●	●	●	●
1/0	●	●	●	●	●	●	●	●	●	●	●	●	●	●	●	●	●	●	●	●	●	●	●	●	●	●	●	●
2/0	●	●	●	●	●	●	●	●	●	●	●	●	●	●	●	●	●	●	●	●	●	●	●	●	●	●	●	●
3/0	●	●	●	●	●	●	●	●	●	●	●	●	●	●	●	●	●	●	●	●	●	●	●	●	●	●	●	●
4/0	●	●	●	●	●	●	●	●	●	●	●	●	●	●	●	●	●	●	●	●	●	●	●	●	●	●	●	●
250MCM	●	●	●	●	●	●	●	●	●	●	●	●	●	●	●	●	●	●	●	●	●	●	●	●	●	●	●	●
300MCM	●	●	●	●	●	●	●	●	●	●	●	●	●	●	●	●	●	●	●	●	●	●	●	●	●	●	●	●
350MCM	●	●	●	●	●	●	●	●	●	●	●	●	●	●	●	●	●	●	●	●	●	●	●	●	●	●	●	●
400MCM	●	●	●	●	●	●	●	●	●	●	●	●	●	●	●	●	●	●	●	●	●	●	●	●	●	●	●	●
500MCM	●	●	●	●	●	●	●	●	●	●	●	●	●	●	●	●	●	●	●	●	●	●	●	●	●	●	●	●
600MCM	●	●	●	●	●	●	●	●	●	●	●	●	●	●	●	●	●	●	●	●	●	●	●	●	●	●	●	●
750MCM	●	●	●	●	●	●	●	●	●	●	●	●	●	●	●	●	●	●	●	●	●	●	●	●	●	●	●	●

Wire Selection

With over 75,000,000 feet of wire sold annually, we know what we're doing! While you'd expect our CDC and RDCs to have a huge supply, you'll also find the 'must have' gauges and types at each of our locations for quick needs. If your project calls for something unique, we'll work with one of our many sources to support you. From full buildings to a short run, we're ready to help you reach your deadlines.

* Stock status subject to change without notice. Available in cuts, reels, and other convenient systems. See your Schaedler Yesco sales rep for specific availability.

Tools & Accessories

- Pullers & tuggers
- Lube
- Coil carts
- Rope and fish tapes
- Grips and heads
- (need help with this)



Specialty Reels



Staying
Competitive



Finding
Staff



Reducing
Overhead



Increasing
Productivity



Staying
Safe



SIMpull™ by Southwire



ProReel Plus by Schaedler Yesco

Specialty Reels

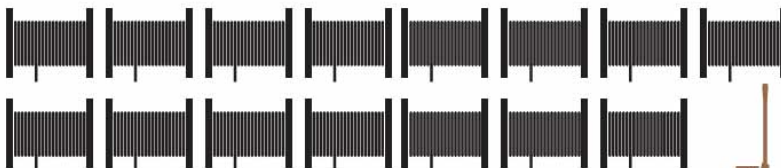
SIMpull™ by Southwire

May only be loaded with Southwire wire products.

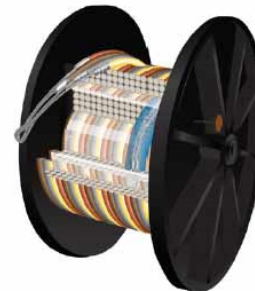
TRADITIONAL

VS.

SIMpull™ REEL PAYOFF



Feeders: The Traditional Way
15 reels, 1 pallet jack, 5 reel jack stands, 5 axles, 7 electricians



1 SIMpull™ REEL Payoff
2 Electricians

Solutions Optimization

- SIMpull™ Reel Payoff
- SIMpull™ Stack® Reel
- SIMpull™ Head Pulling Grips
- SIMpull™ NoLube® Jackets
- Colored Feeder Cable (CU & AL)
- SIMpull™ Rip Chip
- QWIKrope™ Pulling Rope
- Contractor Equipment
- Configurator - Feeder planning tool
- SIMpull™ Cable Pull Calculator - planning tool to model conduit runs & feeder pulls, determine equipment needs, etc...



	Feature	Benefit
SIMpull™ NoLube® Wire Jacket	Slick coating featured on all Southwire product.	Helps reduce time & manpower to pull wire. Eliminates cost and mess of lubricant.
Colored Feeder Wire	10 colors available.	Allows for a safer installation by reducing the risk of phasing errors.
SIMpull™ Reel	Allows one person to safely (on flat level floors) move a reel that weighs up to 6,000 lbs. No need for pallet jacks or other equipment. Fits through 36" wide doorways and right next to feed point.	Reduces risk of injury and over-exertion, offers convenient mobility for greater productivity.
SIMpull™ Stack® Reel	Combines multiple pulls on a single reel. Each circuit cut to length with pre-installed staggered pulling heads in a protective covering. Separated with shrink wrap between each individual circuit and labeled for easy identification. All circuits identified on one label for accurate delivery to the pull site.	Helps reduce material handling and set up by condensing the number of reels needed on a job.
SIMpull™ Head® Pulling Heads	Eliminates the need to make up a pulling head on the job site and helps reduce waste.	Saves a lot of time and effort on the jobsite. No need for pulling jackets or lube. Patented gripping system guaranteed not to pull loose during your pull.
QWIKrope™ Pulling Rope	High Performance pulling rope made from ultra-high molecular weight polyethylene fibers.	24% reduction in the coefficient of friction as compared to traditional pulling ropes. Far less effort to pull. Does not absorb water and does not rot.
Configurator Plus™ Web App	Cloud connected, username specific, function automating tool.	Make updates to your wire feeder schedule on your laptop or tablet.
SIMpull™ Cable Pull Calculator	Calculates conduit size and fill percentage, pulling tensions, cable sidewall pressure, jam probability, voltage drop, ground wire sizing and more.	A fast, convenient and accurate way to plan any pull.



Specialty Reels

ProReel Plus by Schaedler Yesco

May only be loaded with **ANY BRAND** wire products.

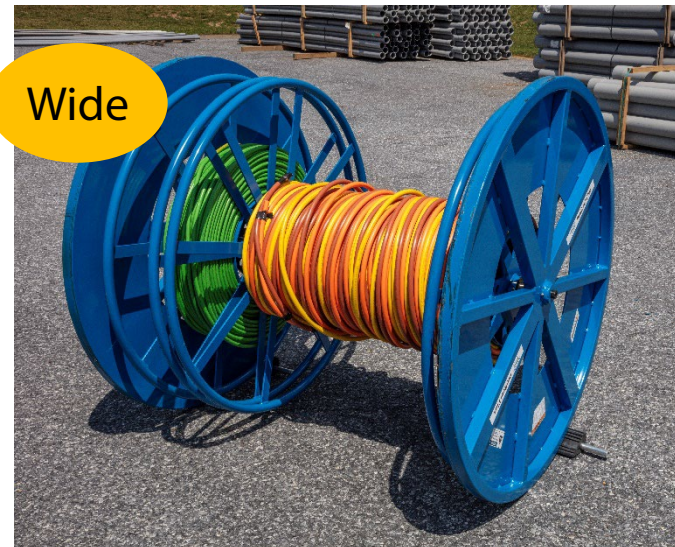
Narrow



#SYD PRP-N-4-1

- Overall height: 49"
- Overall width: 33.75"
- Overall length: 49"
- Free spinning ground
- Allows for a 520' 4 leg 500mcm parallel with a 250 ground

Wide



#SYD PRP4-1 (Coming Soon)

- Overall height: 49"
- Overall width: 50"
- Overall length: 49"
- Free spinning ground
- Allows for a 760' 4 leg 500mcm parallel with a 350 ground

Specialty Reels

ProReel Plus by Schaedler Yesco

May only be loaded with **ANY BRAND** wire products.

Narrow



#SYD PRP-N-4-1-CASTER

- Reel height: 55.31"
- Height with casters: 61.31"
- Overall width: 33.75"
- Overall length: 44"
- Free spinning ground This will allow for a 470' 4 leg 500mcm parallel with a 250 ground

Wide



#SYD PRP-4-1-CASTER

- Reel height: 55.31"
- Height with casters: 61.31"
- Overall width: 50"
- Overall length: 44"
- Free spinning ground
- Allows for a 760' 4 leg 500mcm parallel with a 350 ground

Specialty Reels

ProReel Plus by Schaedler Yesco

May only be loaded with **ANY BRAND** wire products.



- Easy handling and quicker pulls with less labor!



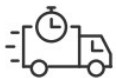
- Designed to keep your team safe



- More efficient handling and pulls means greater productivity



- Can be used with any brand of wire, single or paralleled



- We stock a wide selection of the wire you need most

Ordering

- Reels weigh roughly 900 lbs. empty and are rated for 5000 lbs. when loaded
- Depending on the size of your order and the number of reels, your order may require special delivery
- Standard turnaround time from order placement to delivery is (3) business days; large orders or multiple reel orders may require additional time
- Stacked pulls / multiple pulls on the same reel are available
- Pulling heads are available at \$25 each
- All reels include a self-spinning ground; a separate ground reel not needed

Handling / Jobsite Information

- Can be used for indoor or outdoor pulls where conditions are flat, dry and the reel can be easily rolled
- Reels cannot be unloaded using lift gates on Schaedler Yesco trucks; be sure to have a forklift, Pettibone, or a loading dock at truck height to unload at your delivery location
- Caster-style reels have forklift slots
- Caster-style reels (PRP-4-1-CASTER & PRP-N-4-1-CASTER) include a Pull Break Clamp that will stop the reel from moving during a pull
- The narrow caster reel (PRP-N-4-1-CASTER) also comes with chocks



Pricing

- All reels are rented for \$150 for (3) days; delivery day, pull day, and pick-up day
- Additional days will be charged at \$150 per day
- Reels not returned/picked up within the 3-day rental will be charged \$150 per day
- Misuse of reels causing damage may result in additional fees

Other Services

- Wire planning
- Paralleling & Color Coding
- Pulling Head Installation
- Local Cut Service



Specialists

- Dedicated to providing a **complete** solution that not only meets but exceeds the specifications of your project
- Our goal is to eliminate the typical problems associated with construction projects



Questions?

Stop by booth 704

Products and Solutions for the Electrical Industry

1-800-998-1621 • www.sydist.com

Schaedler
yesco