



**Custom Hoffman Enclosures by
Schaedler Yesco.**

3/28/2024

Products and Solutions for the Electrical Industry

Custom Hoffman Enclosures by Schaedler Yesco

Introduction: Mark Stremmel, Director of our
ModCenter Solutions Group

We supply and Modify enclosures for almost any
Industry:

Food & Beverage

Oil & Gas

Water & Wastewater

Data Centers

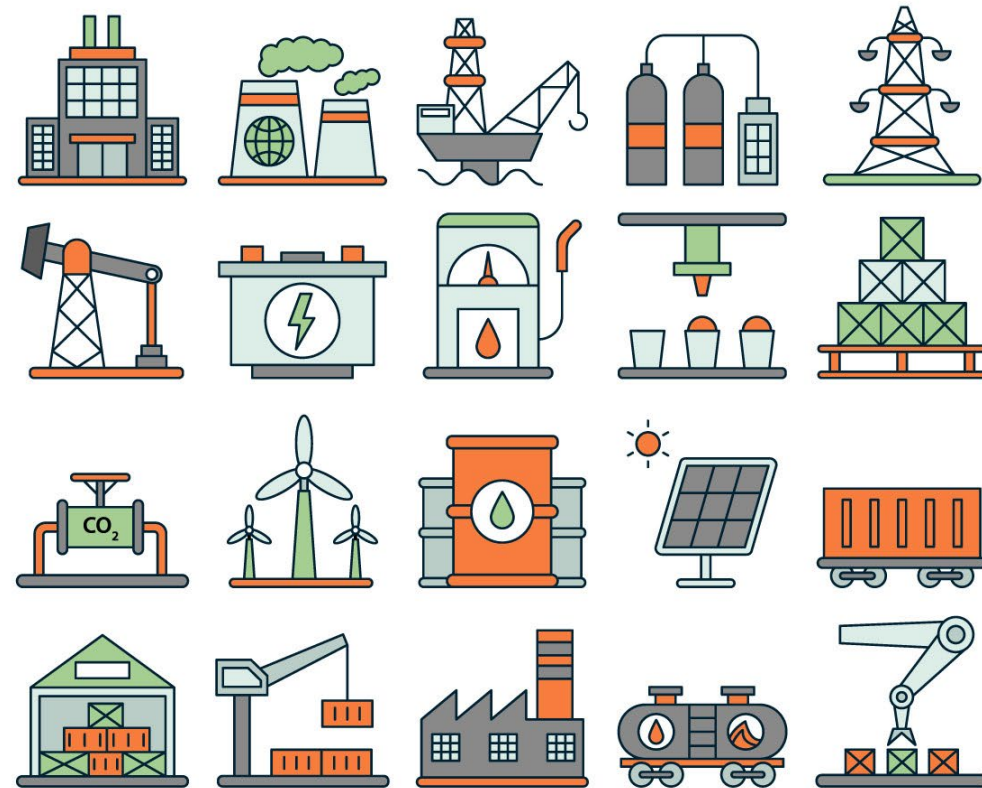
Monitoring & Security

Utilities

Building Infrastructure

Intralogistics & Material Handling

Industrial Automation



Schaedler Yesco Capabilities

- **Two** CNC machines that handle:
 - Volume
 - Size of Enclosure / Backplates
 - Accuracy
 - From Penetration to Penetration is +/- .04mm
- We can cut Stainless Steel, Painted Steel, Fiberglass, and Polycarbonate enclosures.
- **Customer Benefits:**
 - One hour of ModCenter service = 8 - 10 hours of manual labor hours.
 - Redeploy your shop staff to higher-value tasks.
 - You get Precise, clean and predictable cuts.
 - Consistent cuts for repeating projects, and OEM's.
 - No metal shavings to damage components.
 - Improved Safety.
 - Improved efficiency to reduce cost.

Window:
Flat – 92" x 94"
Enclosures – 93" x 86" x 78"



Highlighted Processes

- Modifications include cutting all penetrations into the exterior (six sides) of the enclosure, including the Enclosure Door.
- Modifications also include drilling and tapping the enclosure mounting plate in preparation for components, din-rail, and wireway installations.
- The ModCenter is also capable of cutting holes/penetrations in wire troughs and other steel/aluminum plates if the item fits within the machining "window" of the ModCenter.



Schaedler Yesco Services

• Installation of components:

- Air Conditioners
- Window Kits
- Brackets / Frames
- Studs



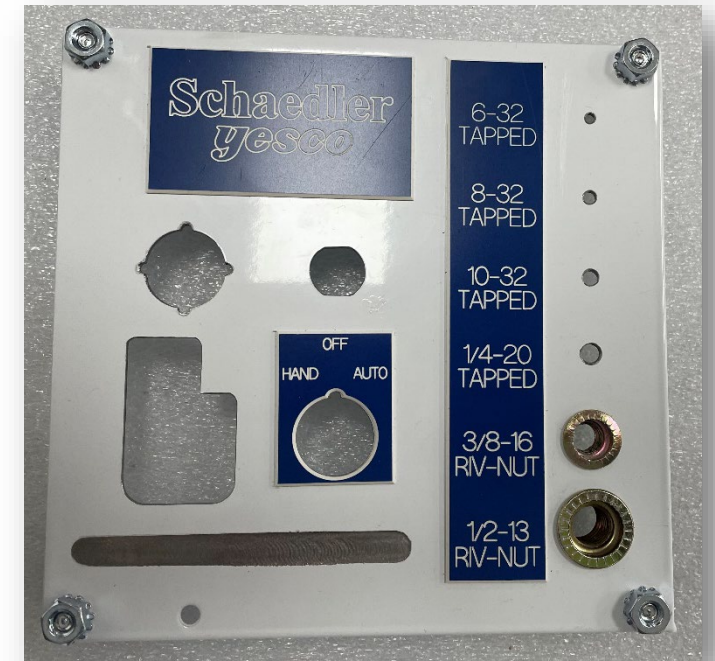
• Packaged Products:

- Combination Starters (Nema)
 - Size 0-1 Fused Disc. Versions
 - Size 0-1 Non-Fused Disc. Versions



• Additional Capabilities:

- Installing Riv Nuts
- Capacitive Stud Welding
- Engraved Lamicoid Legends
- Printing Terminal Markers



Packaged Products

- SYD Combination Starter – Nema (CSN) is a Full voltage, energy-saving solution that provides protection to the field device.
- The Combination Starters come in Nema 4 (Painted Steel RAL7015) and Nema 4x (Stainless Steel 304)
- **SYD Offers four stocked variances that are 480VAC, 3Ph and range from 0-30amps.**
- 18a, Size 0, Fused Disconnect
- 30a, Size 1, Fused Disconnect
- 18a, Size 0, 5HP, Molded Case Circuit Breaker
- 30a, Size 1, 10HP, Molded Case Circuit Breaker
- **Programs Offered**
- *In-Stock Program* - Lead Times on all stocked variances: One day
- *MTO Program* - Lead Times on all Manufacturer to order: One to three Business days
 - Lead Times on all **Customer Specials (CS)**: TBD based on application
- **Emergency* Program* – Preliminary idea that allows a customer, before noon, to order a non-stocked, unique product and it ship the same day. There is an expediting fee for this service.
- *All Combination Starters are UL508a Listed.*



Request for
Quote



Received
the PO



Final
Preparations

- An SYD Sales Rep will send all information to the ModCenter to begin the RFQ Process.
- Information that is critical to the bid:
 - **Customer Name, contact, and Contact Information.** (It is a common practice for a MCS team member to contact the customer to obtain certain clarifications/additional information used to ascertain specifics to generate a quotation).
 - **Enclosure Part Number, and Mounting plate number if required.**
 - **Approved CAD drawing with properly scaled dimensions for all intended cut-outs.**
 - **The quantity of enclosures desired to be cut.**
- Once Received, a ModCenter engineer will estimate all cutouts and put together a bid.
- The customer will receive the bid within a **24hr window.**

Receiving The Purchase Order



- After a PO is received, a MCS team member will review the customer provided approved, CAD drawing for readiness to be entered into a cut file. Any irregularities will be discussed with the customer contact.
- The ModCenter order will be scheduled based on the availability of the enclosure arriving at SYD or stock availability. The Standard lead-time is 2 weeks from arrival of the above.
- Before machining, each enclosure/mounting plate is carefully inspected for defects before it is fixtured into the machine for cutting. Any enclosure/mounting plate is found to be damaged, the enclosure is rejected, and a replacement will be taken from stock or expeditiously ordered.
- After machining, the Enclosure/mounting plate is thoroughly cleaned and degreased.
- The enclosure/mounting plate is then again, thoroughly inspected, a quality report is completed, and a serial number is generated, printed out on a self-adhesive label, and placed on the interior of the enclosure and/or rear of the mounting place. This serial number is tracked on each individual quality report.

- ModCenter Final Preparations:
 - The Hard copy of the Report will be sent along with the enclosure/mounting plate for customer files. A scan of the report will be maintained in SYD's internal system.
 - Each enclosure/mounting plate shall be re-packaged into the original packaging as much as possible. Each package will have the Individual SPEC DRAWING on the box.
 - Completed enclosures/mounting plate will be shipped from SYD to the customer, FREE by SYD professionals.

MODCENTER Solutions Group Quality Program



QA Report (REV A)

CUSTOMER: [REDACTED]
PRODUCT NAME: [REDACTED]
SERIAL # 23292002

INSPECTOR'S INITIAL: NJB

MACHINING

- Enclosure Cut on MC1 Enclosure cut on MC2
- Inspect enclosure for damage
- Inspect mounting plate for damage N/A
- Verify correct panel cutouts as per drawing
- Check Door Gasketing for Integrity and/or Damage
- Check Grounding Studs on Door and inside of Enclosure
- Clean enclosure of machining debris and residue
- Clean mounting plate of machining debris and residue N/A
- Serial number sticker applied to mounting plate N/A
- Serial number sticker applied to enclosure
- Enclosure hardware put with panel material
- Pictures taken of all machined sides and in job folder

CERTIFICATION OF INSPECTION: [Signature]

DATE OF INSPECTION: 18 JUL 2013

N/A - These items are not applicable to this inspection

Questions?

Please stop back at the Custom Hoffman Enclosures booth to ask any additional questions about our services!

Thank you for your time!



Products and Solutions for the Electrical Industry

1-800-998-1621 • www.sydist.com

Schaedler
yesco