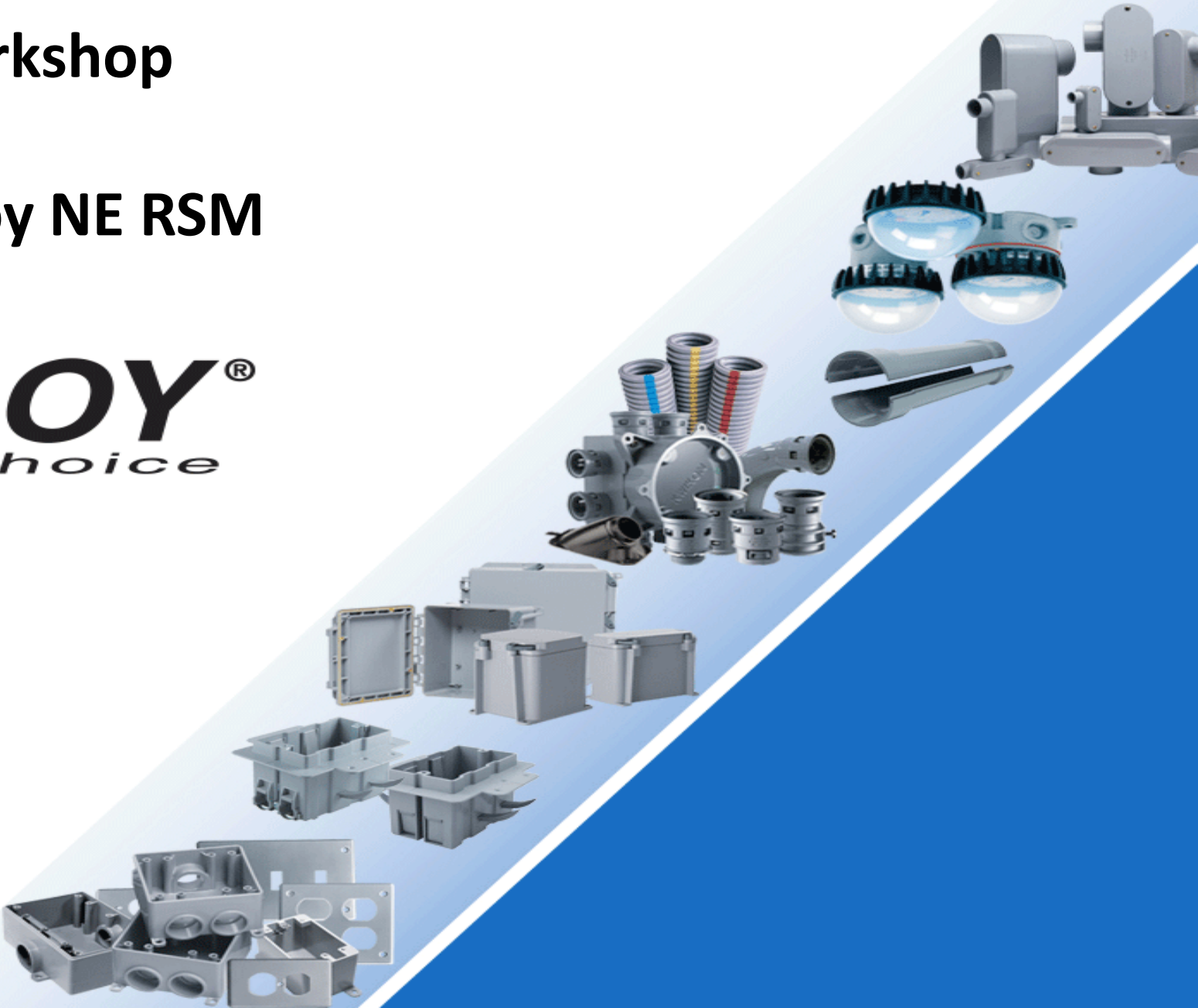


**Schaedler Yesco Expo 2024**  
**JBX Box & Kwikon ENT Workshop**  
**Thursday March 28<sup>th</sup>, 2024**  
**Presenter – Jeff Itzler Kraloy NE RSM**



## Multi-Fittings, Inc. – Kraloy Fittings (An IPEX Company)

- For more than 40 years, Kraloy has been a pioneer in the field of PVC conduit fittings.
- As the first UL approved manufacturer of PVC fittings, Kraloy is an industry leader today.
- Plants are strategically located in North America.
- Multiple distribution centers in the USA including Middletown, PA
- Kraloy Fittings provides one stop shopping for nearly all your non-metallic needs – molded fittings, elbows, spacers, wet and hazardous location fixtures, Kwikon ENT system, and non-metallic liquidtight pipe and fittings.



MULTI FITTINGS



**IPEX**  
by aliaxis

## Product Offering - Kraloy Fittings

**KRALOY PVC FITTINGS**

**SCEPTALIGHT**  
Non Metallic Light Fixtures

**KWIKON ENT**  
Pipe & Fittings

**KWIKFLEX NMLT**  
Liquid-tight & Fittings

**EPR Repair Kits**

**SCEPTACON**  
Bore-able Conduit

**Single Source Quality Products**

# KRALOY JBOX

- **Fasteners – close by hand, open by tool**
- **Lock-Out Option – 6” to 16” sizes**
- **Integrated Gasket – molded in place**
- **Flat Cover – no ribs, no engravings**
- **Back Panel / DIN Rail – 6” to 16” sizes, standard panel or DIN rail**
- **Gridlines – easy reference for drilling knockouts**
- **Mounting Feet – molded on corners**
- **Pole Mount Kits – 4” to 12” poles**
- **NEMA 1, 2, 3R, 4, 4X, 6\*, 6P\*, 12, 13**
- **Sizes - 4x4x2 through 16x16x10\*\***



\*Applies only to sizes 4” to 12”

\*\*Largest molded PVC boxes available today

# KRALOY HINGED JBOX

- **Hinged Lid PVC JBoxes are a cost effective alternative to Fiberglass or Polycarbonate enclosures for your customers**
- **Hinged Boxes will have the following NEMA Ratings: 1,2,3R,4,4X,12 & 13**
- **All boxes are UL Listed and CSA Certified**
- **Boxes are ideal for use indoors or outdoors**



## **SIZES**

**8x8x4**

**12x10x6**

**12x12x6**

**14x14x8**

**16x16x10**

**8x8x7**

**12x12x4**

**12x12x8**

**14x14x10**

# KRALOY HINGED JBOX

- **Hinged Cover – removable & opens to 214°**
- **Fasteners – close by hand, open by tool**
- **Lock-Out Option – 6” to 16” sizes**
- **Integrated Gasket – molded in place**
- **Flat Cover – no ribs, no engravings**
- **Molded Standoffs – for back panel & DIN rail installation**
- **Gridlines – easy reference for drilling knockouts**
- **Mounting Feet – molded on corners**
- **Pole Mount Kits – 4” to 12” poles**



# KRALOY JUNCTION BOXES

## OLD STYLE JUNCTION BOX

- Old style still available
- External mounting feet
- Brass inserts & screws
- PVC gaskets



# KRALOY JUNCTION BOXES – CUSTOM LARGE SIZES

## BULLETIN



### Specifications:

- This item can be customized to specific dimensions
- Max dimensions : 48" x 48" x 36" D
- Material is rated UL FLAME CLASS V-0
- Material UL File : E120155
- All fabricated junction boxes are Rated NEMA 4X
- JBxxxx: standard junction box, w/ shoe box style lid (aka screw cover)



**NOTE:**  
The Junction box w/ hinged cover is available on request. These junction boxes come with a PVC back panel and mounting feet.

## KRALOY custom fabricated junction boxes

Ideal for use whenever PVC conduit and fittings are employed, Kraloy junction boxes are ideal for indoor, outdoor, wet locations and challenging corrosive environments. They are well suited for a wide range of applications such as agricultural, wash down, water and waste-water treatment facilities, corrosive environments, marine and car washes.

Our Junction Box with screw cover and Junction Box with hinged cover can be customized to specific dimensions.

### Custom Fab Item Codes:

JB = Junction box with screw cover  
(length, width, depth) (max dimensions 48" x 48" x 36" D)

### Max dimension 48 x 48 x 36

Dimension Size (in)	Part Number	Product Code	Dimension Size (in)	Part Number	Product Code
16 x 14 x 6	JB16146	178012	24 x 24 x 8	JB24248	078971
16 x 16 x 12	JB161612	078951	24 x 24 x 8	JB24248	078972
18 x 12 x 6	JB18126	078253	24 x 24 x 10	JB242410	078880
18 x 16 x 8	JB18168	078949	24 x 24 x 12	JB242412	078896
18 x 18 x 6	JB18186	078957	24 x 24 x 24	JB242424	078963
18 x 18 x 8	JB18188	078955	30 x 30 x 10	JB303010	078970
18 x 18 x 10	JB181810	078416	36 x 24 x 8	JB36248	278031
18 x 18 x 12	JB181812	078061	36 x 36 x 8	JB36368	178241
24 x 18 x 8	JB24188	078956	36 x 36 x 12	JB363612	078989
24 x 18 x 12	JB241812	078926			

**NOTE:**  
Product is not traffic rated, and not recommended for direct underground burial.  
PVC NEMA 4x screw cover manufactured using 1/4" thick rigid PVC with welded construction and include gasketed lid.

**Contact us:** Toll free: (800) 265-1815 | [kraloyfittings.com](http://kraloyfittings.com)



## Kwikon ENT System

- 1988 KWIKON Product Line Launched
- Only Complete Concrete-Tight System Available in North America
- Designed to Replace EMT Conduit in Slabs, Walls & Ceilings
- Replaces PVC SCH 40 Conduit in Slabs
- Pipe ½” – 2.5”
- Industry’s Most Complete Line of Fittings
- Reels, Coils & 10’ Sticks
- Coils and Reels Wrapped with Protective Cover
- Available with Blue, Red or Yellow Stripe
- Non Conductive Non Corrosive

## Kwikon ENT - Applications

- Residential
  - Condominiums
  - Multi or Single Family
  - Low or High Rise
- Commercial
  - Hotel/Motel, Office, Shopping Malls, etc.
  - Low or High Rise
- Hospitals & Nursing Homes
- Stadiums & Arenas

## **Kwikon ENT - Applications**



## **Kwikon ENT - Applications**



## Kwikon ENT - Applications



## **Kwikon ENT - Applications**



# Kwikon ENT Fittings



## KWIKON Fittings

- 73 skus
- Contractor preferred for 30+ years
- 6 locking tabs to ensure system integrity
- All style of slab boxes; shallow/deep, round/square, and with & without hubs
- Straight and angled stubbies and ENT supports



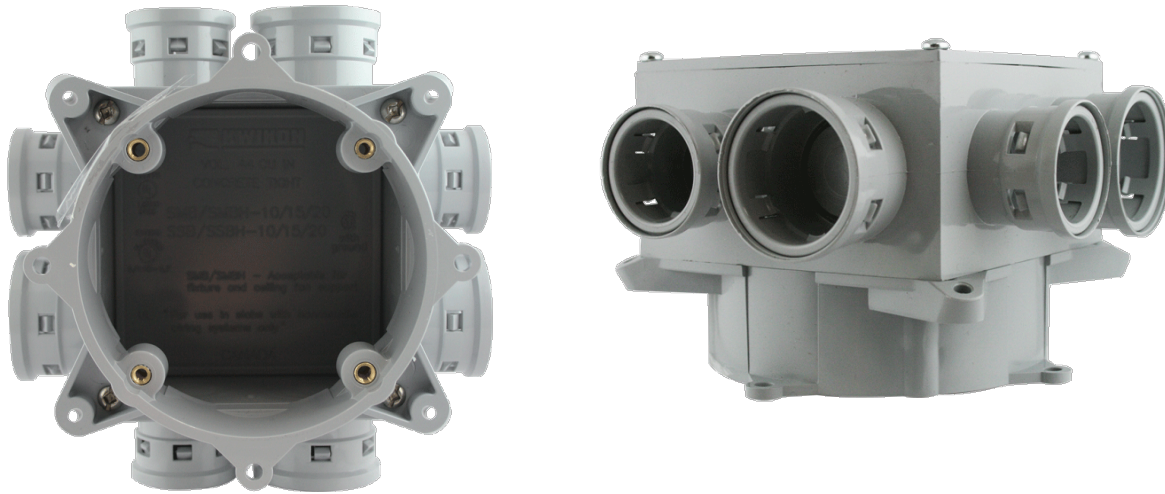
## Kwikon ENT Product Features

- ½" – 2.5"
- Industry's most Complete Line of Fittings
- Reels, Coils & 10' sticks
- Coils and Reels Wrapped with Protective Cover
- Available with Blue, Red or Yellow Stripe
- Non Conductive Non Corrosive
- 360° 6 Tab Locking Mechanism
- Concrete-Tight
- Minimum Pullout 175 ft-lb Force
- Easily Bent, Cut & Assembled
- Reduced Coefficient of Friction Allows Conductors to be Pulled in Easily



# Kwikon Slab Boxes - Clear Vue Covers

- Corner Mounted Slab Box
  - Fastening holes have been moved to corners to allow for nailing of boxes



**KRALOY®**  
NEW CLEAR VUE™ COVERS

**STANDARDS**  
UL 514C

**NEW PRODUCT SHOWCASE**

**Protect, Identify & Remove**

Kwikon's NEW Clear Vue™ Covers are now available on all Round, Square and Shear Wall Kwikon Boxes.

Designed to stand up to the rigors of a slab deck, Clear Vue covers are manufactured to UL Standard 514C for Dielectric Strength and Flammability and ASTM rated for Impact Strength. While the Clear Vue Covers are designed to keep concrete slurry out of the box during a pour, they also provide the following benefits:

- Covers are easily removed to allow contractors to mark or paint the inside of the box for identification
- Clear Covers allow contractors to see the markings inside the box after the pour without having to remove the cover
- Covers prevent ceiling stucco spray from entering the box
- The tight friction-fit allows boxes to be prefabricated off site and transported to the jobsite without danger of the covers falling off during transportation
- Covers are easy to remove during the finishing stage

**Products Include:**  
All SMB, SMBS, SSBH, SVDB, SVSB, MB and MBH boxes.

**KRALOY®**  
The Fittings Connection

Toll Free: (800) 265-1815  
Direct: (519) 681-2140  
www.kraloyfittings.com

Products are manufactured by WFS Electrical Inc. and distributed in the United States by Kraloy, a division of North Fittings Corp. Kraloy® is a trademark of North Fittings Corp.

PELKF0120807  
© 2013 Kraloy

# Kwikon ENT - Concrete Wall Boxes

## Features and Benefits:

- Fully assembled and installation ready
- Perfectly suited for deep or shallow construction preferences
- Kwikon hubs do not protrude inside the box
- Clear-View covers are concrete tight
- Made of non-metallic, non-conductive and non-corroding PVC, these boxes are durable, lightweight and highly engineered: perfect for the tough poured wall environment.

**KWIKON CONCRETE WALL BOXES**

### New Kwikon Single Gang Concrete Wall Boxes

**Features and Benefits:**

- Fully assembled and installation ready
- Perfectly suited for deep or shallow construction preferences
- Kwikon hubs do not protrude inside the box
- Concrete-tight poly film covering the box opening

**Fully assembled wall boxes that save valuable jobsite time and labor**

New Kwikon Single Gang Concrete Wall Boxes arrive on the jobsite fully assembled and ready to install. Say goodbye to wasted energy and time spent wrapping and taping product in preparation of the concrete pour. A Kwikon Concrete Wall Box arrives fully assembled with the hubs, protective poly film and single gang opening all installation ready.

Made of nonmetallic, non-conductive and non-corroding PVC, these fittings are durable, lightweight and highly engineered; perfect for the tough poured wall environment.

Toll Free: (800) 265-1815  
Direct: (519) 681-2140  
[www.kraloyfittings.com](http://www.kraloyfittings.com)

PIELKXKR090306  
© 2009 Kraloy

NEW PRODUCT SHOWCASE

3-1/2" Deep Box				
Size (inches)	Product Code	Part Number	UPC	Pkg Qty
4 x 1/2, 4 x 3/4	089496	SVDB-H-10/15	622454334342	25
4 x 3/4, 4 x 1	089049	SVDB-H-15/20	622454333505	25
4 x 1/2, 2 x 3/4, 2 x 1	089052	SVDB-H-10/20	622454333543	25
8 x 3/4	089065	SVDB-H-15	622454380486	25

2" Shallow Box				
Size (inches)	Product Code	Part Number	UPC	Pkg Qty
4 x 1/2	089054	SVSB-H-10	622454333703	70
4 x 3/4	089053	SVSB-H-15	622454333550	70

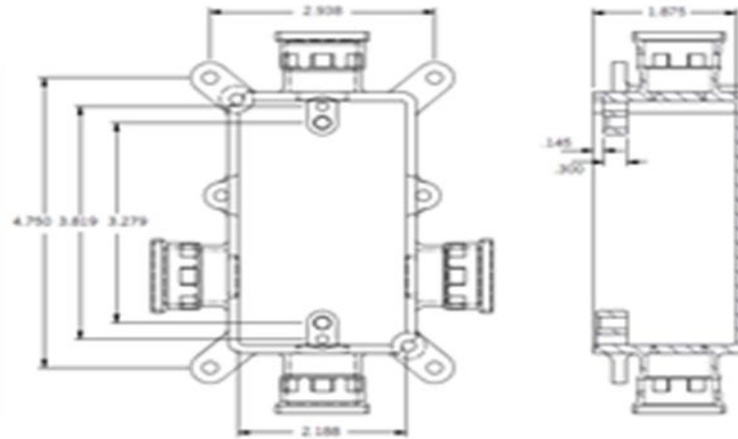
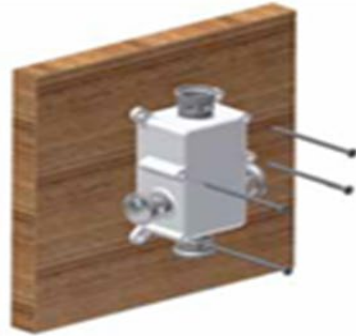
Kwikon provides a complete solution - ENT raceway, fittings, floor and wall boxes - all built and supported by Kraloy, your single source, ensuring a perfect concrete tight fit.

Outlet Boxes & Fittings  
Classified for Fire Resistance  
(see UL Fire Resistance Directory)

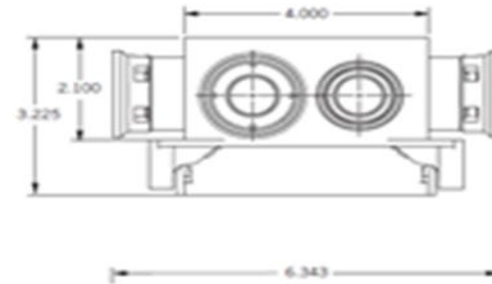
UL 263, 1, 2, 3 & 4 Hr. W.  
UL 514C, C22.2 No. 0 & 18,  
UL 1653, C22.2 No. 227

# Kwikon ENT - Concrete Wall Boxes Multiple Mounting Options

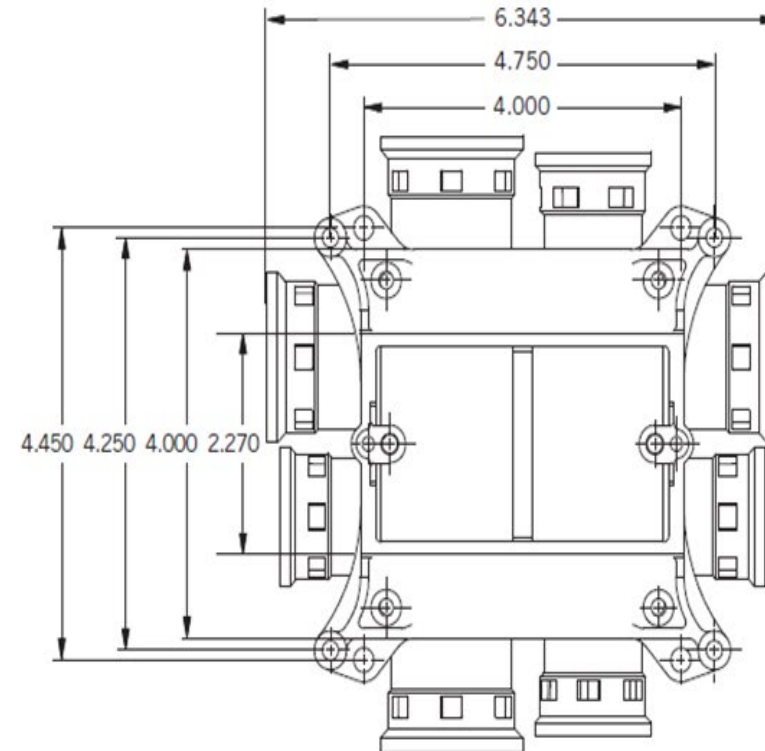
**Shallow Box**



**Deep Box**



# Kwikon ENT - Concrete Wall Boxes Multiple Mounting Options



# Kwikon ENT Support Units

- One SKU for ½” to 2” ESU Raises ENT to rebar height
- Ideal for use in Post-tension slabs
- Allows ENT to be supported in Post-tension slabs as per the NEC Code
- Can be secured to form
- Minimal footprint
- Very Cost Effective



**KRALOY®**  
ENT SUPPORT UNIT (ESU)

**FEATURE & BENEFITS**

- One Size Fits All 1/2" - 2"
- Saves Time and Labor
  - Easy Locking Mechanism
- Securable to the Concrete Form
- Minimal footprint reduces amount of surface contact

**ENT Support for Concrete Slab Construction**

The new ENT Support Unit (ESU) is designed to raise the tubing or conduit up off the concrete form during the concrete pour maintaining a level roadway. With its minimal surface contact, the ESU allows for maximum aggregate flow and concrete consolidation.

Easy to use, the ESU wraps around any size of ENT from 1/2" to 2". It is perfect for use in high rise buildings constructed with post-tensioned (PT) concrete slabs. In PT construction, the reinforcing rebar is spaced far apart requiring the ENT to be supported every 2 to 3 feet.

**Delivering Value**

Constructed with an easy locking mechanism, the ESU saves installation time and labor because it is installed in just seconds, a fraction of the time compared to using traditional tie wire. The plastic material also eliminates corrosion on exposed surfaces.

**Versatility**

Equipped with two rousing guides, the ESU can be nailed or screwed into the concrete form to ensure that it does not get knocked over during the concrete pour. The rousing guides also allow the ESU to be used in tilt up or precast construction.

Part Number	Product Code	UPC	Quantity
ESU-10-35	089349	602454346163	20

Products are manufactured by Kwikon Plastics, Inc. and distributed by Kraloy, a division of North Forge Corp. Kraloy is a trademark of North Forge Corp.

# Kwikon ENT Floor Box Stand Kit

## North American Industry FIRST

- Allows Floor Boxes to be used in slabs depths of 5½” to 10”
- Raises entrance hubs to rebar height
- Minimizes Footprint on Concrete Form
- Withstands Tough Job Site Conditions
- Easy to Install
- Cost Effective
- Ideal for use in Post-tension slabs
- Very Cost Effective

**KRALOY®**  
ROUND FLOOR BOX STAND

**FEATURE & BENEFITS**

- Four Adjustable Heights
  - Raises Entrance Hubs to Rebar
  - Minimizes Footprint on Concrete Form
  - Withstands Tough Job Site Conditions
  - Easy to Install
  - Cost Effective

**NEW PRODUCT SHOWCASE**

**One Kit, Four Heights, One Low Cost!**

Kraloy introduces the new Round Floor Box & Stand Kit, an extension to the Kraloy Floor Box product line.

This simple yet innovative Round Floor Box Stand is equipped with several height brackets which accommodate the different rebar and post-tension cable heights and slab depths found from job-site to job-site. When installed together, the Floor Box and Stand can be used to 5-10" to 10" slab depths.

The Round Floor Box easily traps into the Stand on one of the four convenient height brackets at 2-10", 3", 3-10" and 4". By raising the Floor Box off the concrete form, the footprint is minimized which reduces the amount of time the contractor spends finishing the concrete surface. In addition, the various Stand heights allow the ENT to enter the Box in a flat and straight path, resulting in less effort by the contractor when pulling in the electrical cable.

**Floor Box Stand**

Sold as a Kit, Kraloy offers the Round Floor Box and Stand conveniently packaged together as one complete product offering.

Part Number	Product Code	QTY	Standard Pkg
FBS-KIT	176269	622454382183	5

**KRALOY®**  
Floor Fixing Systems

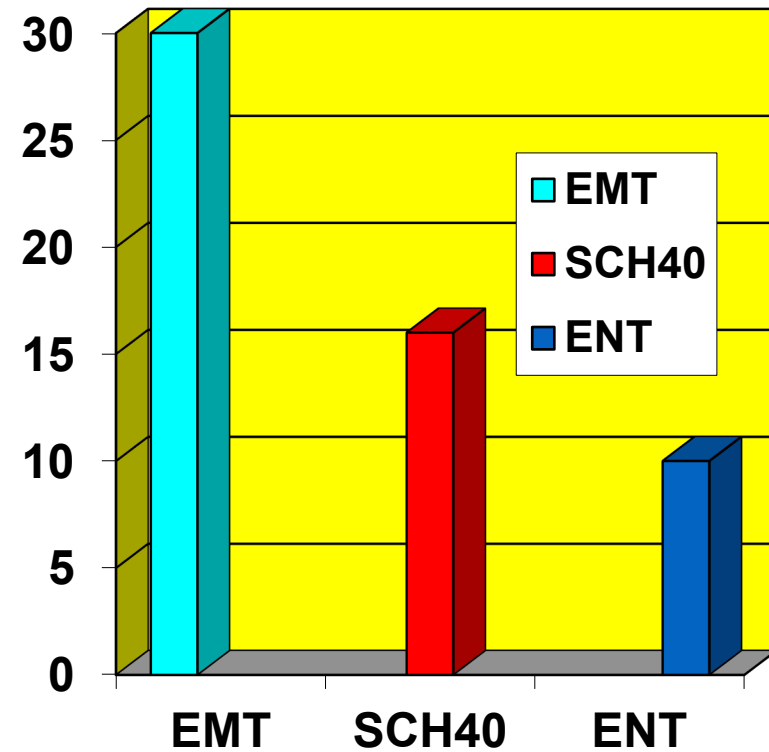
Toll Free: (800) 260-1818  
Direct: (313) 681-4140  
www.kraloyfixings.com

Products are manufactured by KRS Concrete Inc. and patented by Kraloy a division of Multi-Fixing Inc.  
© Kraloy Inc. a Division of Multi-Fixing Inc.

PL20000001

## Kwikon ENT - Tubing Features

- Ease of Handling
- Light Weight
  - 100' EMT = 30 lbs.
  - 100' Sch 40 = 16 lbs.
  - 100' ENT = 10 lbs.
- 66% Lighter than Metal



## Kwikon ENT - Tubing Benefits

- Safe and Reliable System
- Product does not Corrode in the Deck
- Reduced Installation Cost
- Reduces Building Owners Costs



**Thank you for your Support !**

**Any questions?**

