

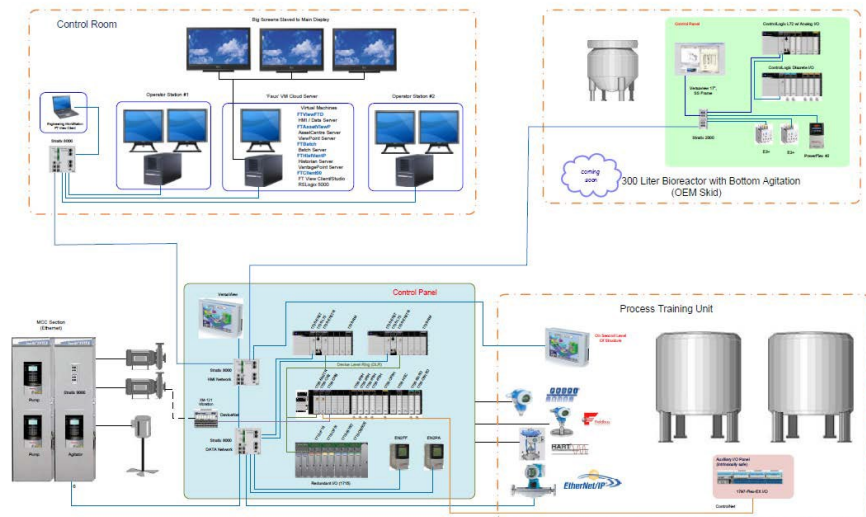
### The Process Technology Unit

Rockwell Automation, Endress+Hauser, and Eastern Controls have teamed up to create a fully functional "mini process plant" to demonstrate our integrated solutions. At this facility you can see the operation of a system consisting of two, one-thousand gallon tanks interconnected by a series of piping having over 90 instruments and valves controlled by PlantPax.

- ◆ The Process Technology Unit provides examples of the power of the Rockwell Automation Connected Enterprise to provide process control, discrete control, batch sequencing, and power integration within the same architecture.
- ◆ Process equipment builders and System Integrators will see how they can lower the total cost to design, develop, and deliver, while improving time to market. They can also explore the engineering experience, hardware & software needed to support application proof-of-concept, and provide customer demonstrations.
- ◆ End users can experience simple or complex process loop control, smart instrumentation interfaces such as HART, Ether-Net/IP, interactive operator workstation navigation typical of a Process Control System but tightly integrated with the discrete control required by skid OEMs, and batch sequencing used by process equipment suppliers, all integrated into a single seamless automation system.



Architecture of a "mini process plant" presented at the Process Technology Unit:



### Multi-disciplined & Scalable

The Process Technology Unit shows working examples of how the Connected Enterprise and PlantPax scalable solutions help solve challenges present in today's enterprise:

- ◆ Process, Batch, Discrete, Drives & Safety
- ◆ Design & Configuration tools
- ◆ Performance & Visibility
- ◆ Data, Asset & Production Management
- ◆ Quality & Compliance

The PTU is located at the Eastern Controls facility in Edgemont, PA. To schedule a visit, contact your local Authorized Distributor or Rockwell Automation sales representative.



### Schedule your appointment today

Use the selection form below to indicate the technologies, solutions or products you are interested in discussing with Rockwell Automation at the Process Technology Unit.

The facility is located at: Eastern Controls, Inc., 3866 N Providence Road, Edgemont, PA 19028. There is a large training room with projector and large screen for training sessions and presentations.

#### PlantPax Process Control System Overview

- Industrial Data Center
  - Deployed Virtual Machines in the PlantPax system
- High-Availability:
  - Redundant controllers
  - EtherNet/IP embedded switch technology (DLR)
  - Redundant I/O
  - Rockwell / Cisco Stratix switches deployed
- Development and Engineering Tools and Resources
  - Engineering Workstation tools
  - Process System Estimator—IAB
  - Library of Process Objects
- Process Information and Historian
  - Information Dashboard
  - Wireless Mobility View
  - Data Historian
- ThinManager and Relevance Thin Client terminals and mobility
- IntelliCenter EtherNet/IP-based Motor Control Center
  - PowerFlex 750-series EtherNet/IP drives
  - e300 motor starters
- Visualization
  - Control Room and Distributed Operator Workstations
  - Virtualized Redundant Visualization Servers
  - IndWS for OEM skid
- AssetCentre Source Control, Disaster Recovery, Security, Audit
- Integrated Condition Monitoring
- Process Safety with OptiSIS
- Integrated Batch "COMING SOON"

